

¥



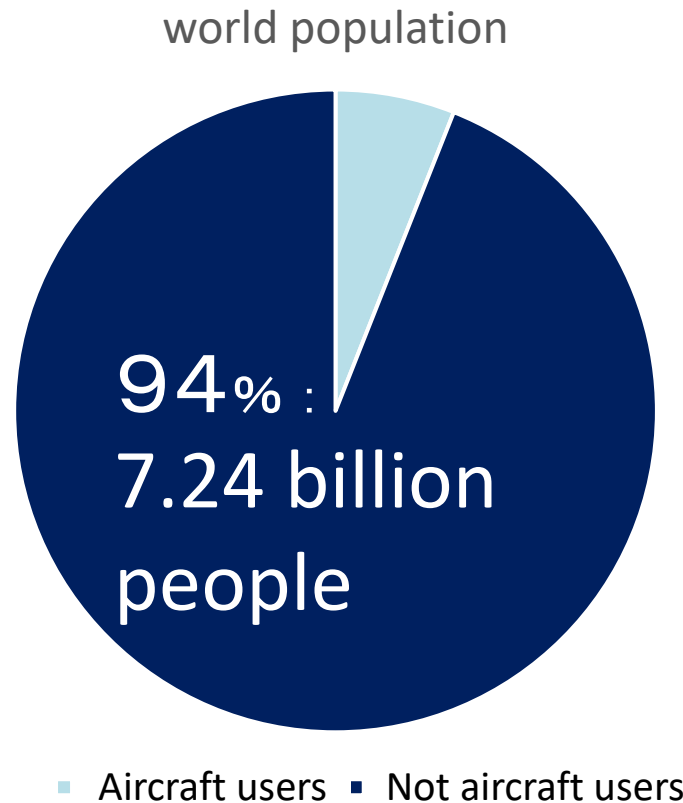
GENCHI
business

Matching people who can not go and people
who are at the destination

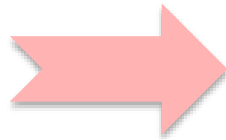
**Resolve "can not go", On-demand
Remote Agent Service**

2020/10/15 **toraru** co.,ltd. CEO:Jun Nishiguchi office@toraru.com

94% of the world's population cannot fly in the air. We fix that Problem !



Nowadays, due to the Covid-19, international flights to many countries are no longer flying.



ZOOM has become the standard for online meetings, **but only for meetings.**

Benefits

Large enterprises enjoy up to 80% savings in travel costs, by implementing our On-demand Remote Agent solution

For Example : Participation in the exhibition.

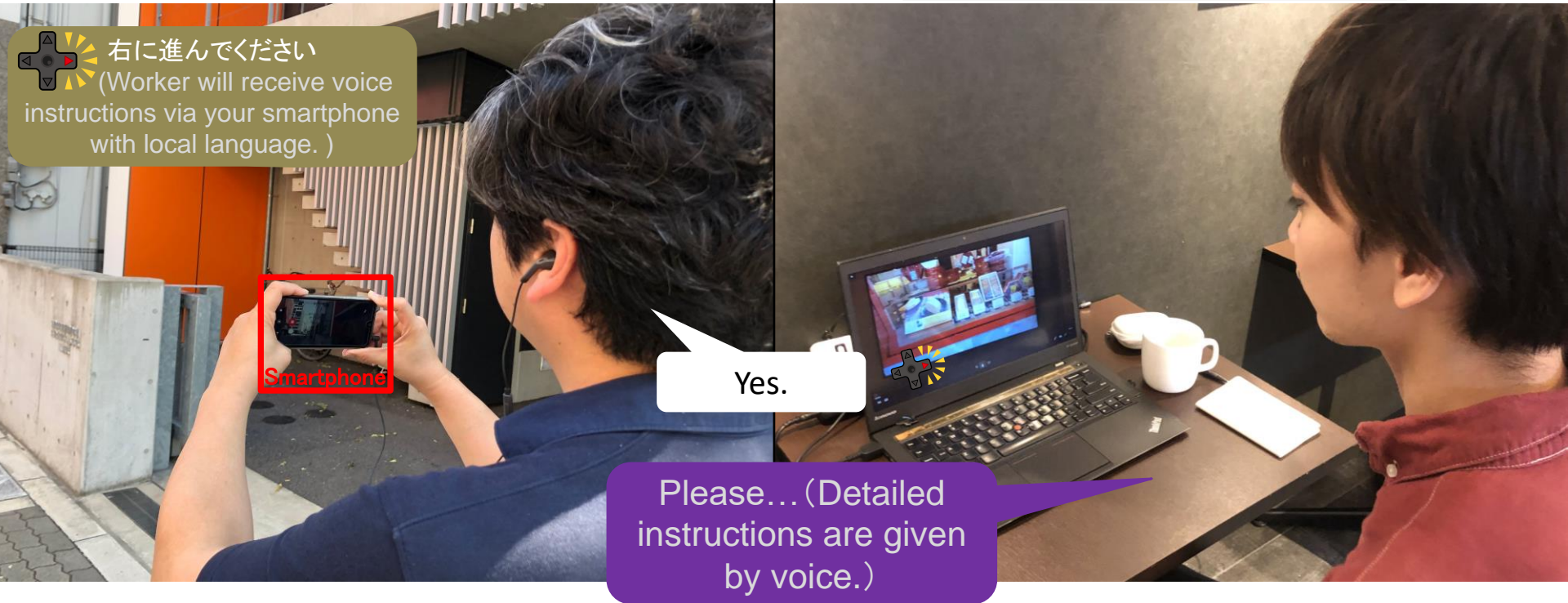
Overseas Buyer.

Research company.

If you use this service you can control a local person.
If you do it this way, you will be able to go anywhere!

Overseas Worker

Orderer



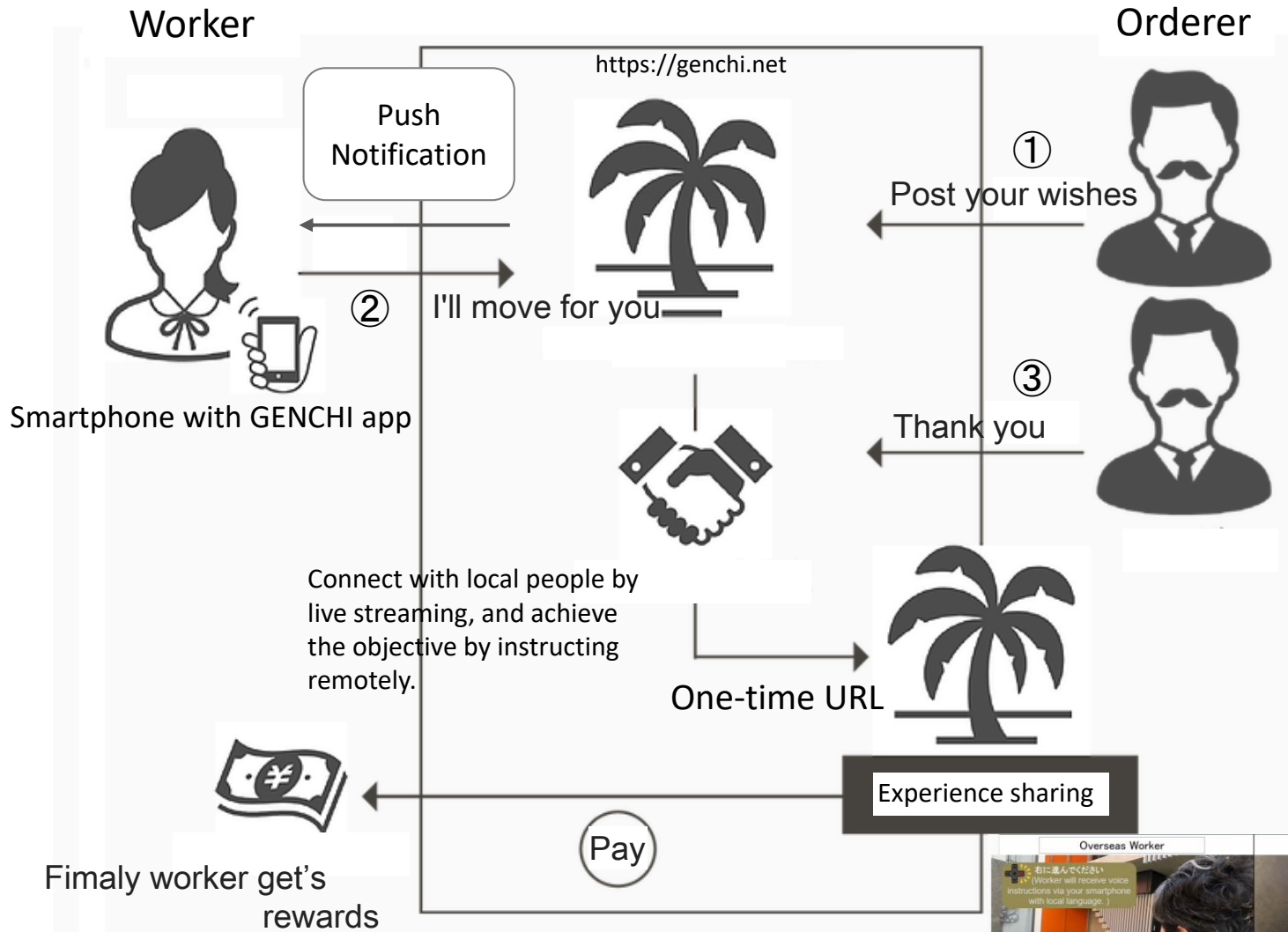
↑ Gig-Worker

People who have traveled or lived locally. He works for his client.
For example, buying or going to see someone.

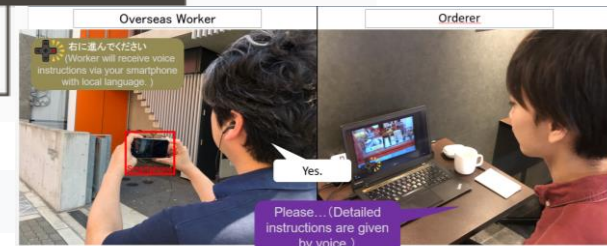
We have created a network of 1000 workers in Japan.

Matching Service

Post your wishes and have someone who has time to do it for you



Patent



Compare GENCHI

	Air plane	Flytographer	GENCHI	UPWORK	Rabit task
Physically on-site can go	<input checked="" type="checkbox"/>				
Realtime Streaming	<input checked="" type="checkbox"/>		<input checked="" type="checkbox"/>		
communication	<input checked="" type="checkbox"/>		<input checked="" type="checkbox"/>		
Worker Assist			<input checked="" type="checkbox"/> For Example. Interpreter		
costs	\$80~	\$250~	\$30~	\$80~	\$80~
For Example costs : From Seoul / Paris to Japan	\$80~/ \$1500~	\$250~/ \$250~	\$30~ / \$30~	\$80~/ \$80~	\$80~/ \$80~
For Example times : From Seoul / Paris to Japan	8hours/ 20hours	8hours/ 8hours	5 minutes	8hours/ 8hours	8hours/ 8hours
You can work at destination.	<input checked="" type="checkbox"/>	They will not	<input checked="" type="checkbox"/> But Japan Only now		

6. Go-to-Market Plan

Participation in the exhibition.

(through partners)



Overseas Buyer Or Research company

(through partners)



Individual customers

(Direct to customers)

7. Traction / Accomplishments

Customer trials :Over 200 times.

(However, the exhibition market that we originally expected has disappeared due to covid-19.)

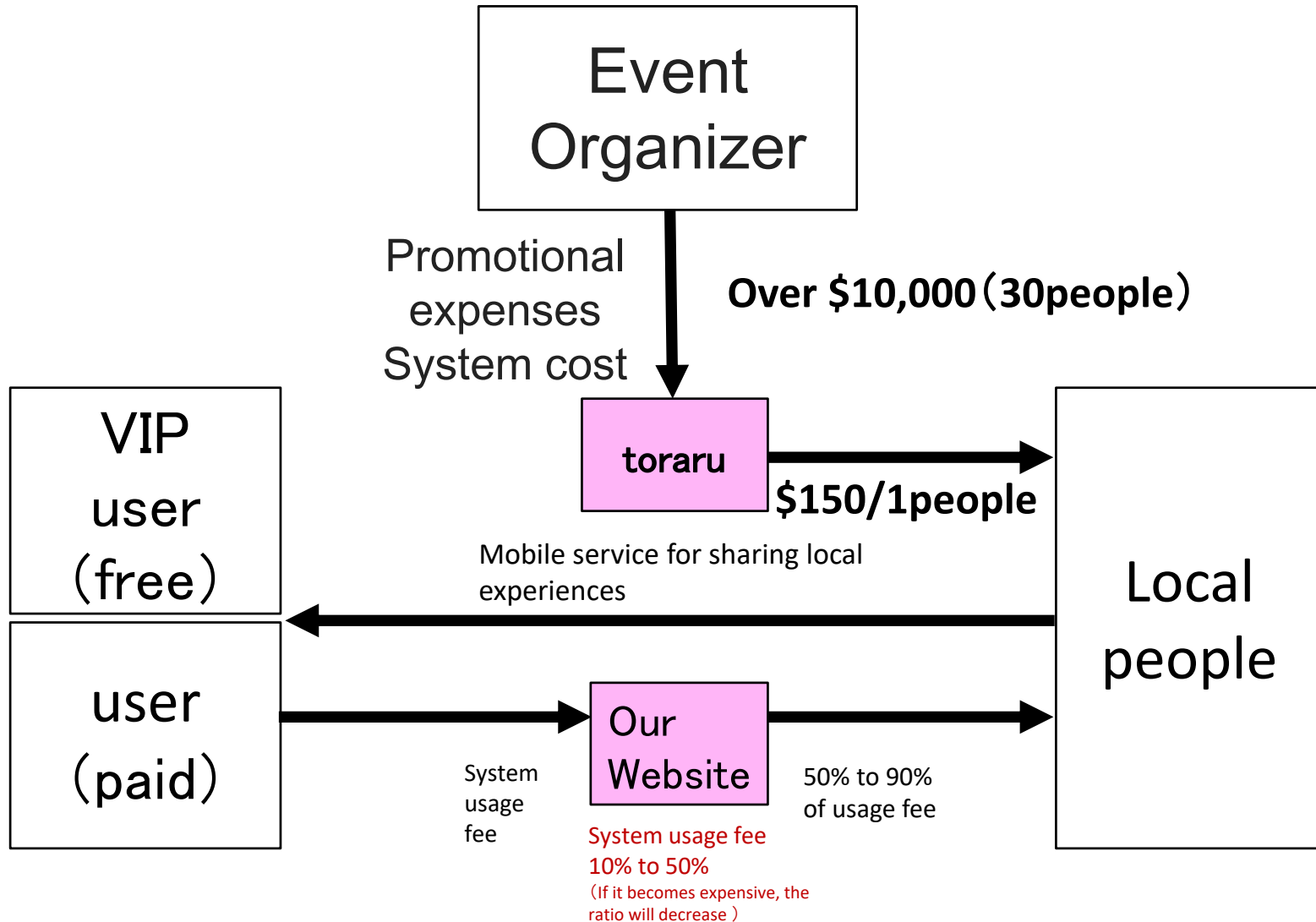
Customer testimonials:

The quality is no different from what we actually go to.
I use this if it is cheaper than my travel expenses.

Patents: We have 2 Patents in Japan.

(Remote Payment & Remote Agent Service)

8. Business model



9. Financial Overview

Total amount invested to date
almost USD \$ 128,000

Current 3-year forward-looking forecast

(\$USD)	2020	2021	2022	2023
Sales	489,164,000	3,817,606,000	109,338,788,000	651,226,160,000
Ordinary profit	-850,720,000	-8,691,168,200	4,912,269,960	273,095,582,240

10. Team



Born in Osaka
CEO/Hacker
JUN

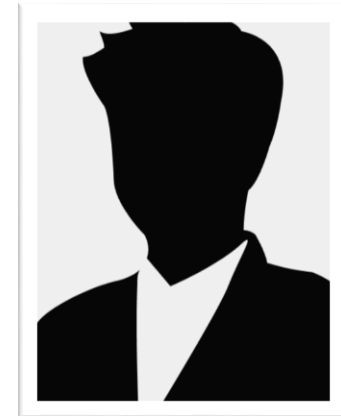
Business started in the second year of high school. Graduated from Tezukayama University (Faculty of Liberal Arts, Department of Japanese History). Realizing that he has the sales force to sell at the time of job hunting, he went to an IT company in search of new capabilities. Therefore, development ability is obtained from planning. After becoming independent, experienced one manufacturer. We have been solving problems at the "usable" level from the customer's perspective. Has a track record of installation in major commercial facilities. We also propose robots. Established **toraru** to realize the "I can't go" solution.



Born in Nagano
Engineers
YASUSHI



Born in Fukushima
Adult supervision
KADUHIKO



Born in Kyoto
Sales
YOSUKE

11. The Ask & Use of Funds

If you are looking for money,
describe how you plan to use it

We need USD\$1,000,000.

GENCHI Development & Advertising.

We looking for Chief Marketing Officer.

To everyone in the world
New ways of work
<http://genchi.net>



Presenter : JUN NISHIGUCHI

Contact Info : office@toraru.co.jp

Company Name : toraru co.,ltd.



toraru